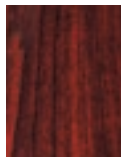
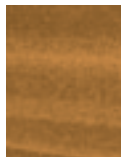


Colours... adding value and choice

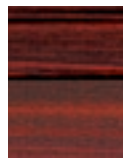
Colours: Don't forget that in addition to gleaming white your REHAU-Dimension *Plus* conservatory is also available in: wood effect both sides or wood effect outside, white inside and by a special order - in a REHAU colour coating process called Acryl II – in over 150 RAL colours.



Mahogany



Golden Oak



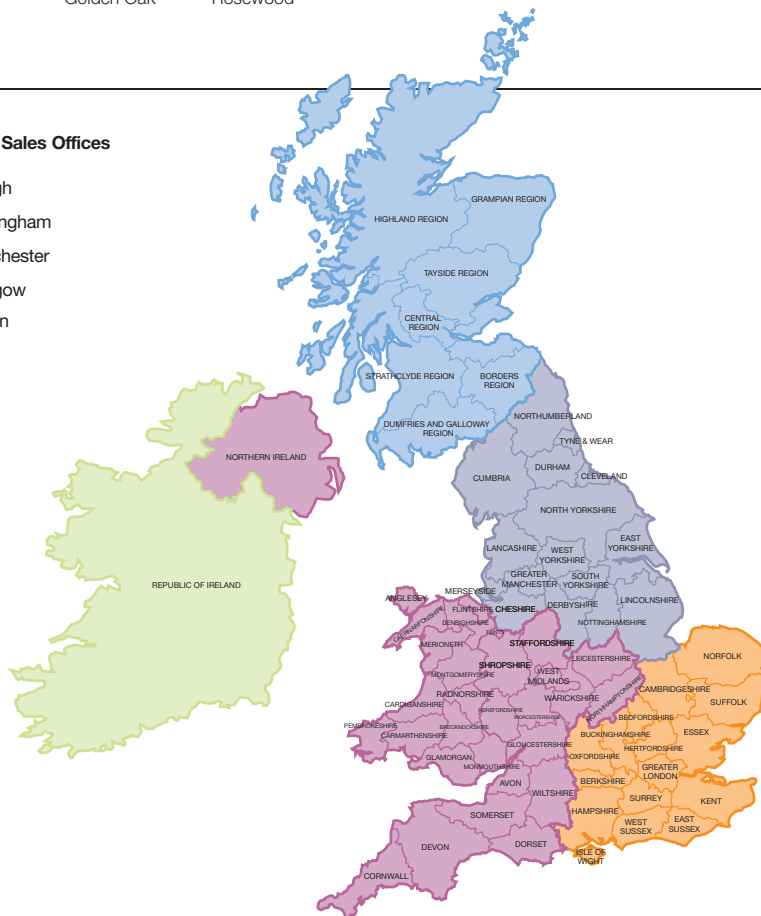
Rosewood



Don't forget to ask about REHAU's SOLELEC system of electric under-floor heating – the perfect heating solution for conservatories - adding value and extra profits.

Regional Sales Offices

- Slough
- Birmingham
- Manchester
- Glasgow
- Dublin



Our verbal and written application engineering advice is based upon experience and the best of our knowledge. However it is to be regarded as non-binding information. Working conditions and use under conditions for which the product was not intended and over which we have no influence exclude any claim resulting from our information. We recommend that a suitable check is made as to whether the REHAU product is suitable for the envisaged purpose. Application, use and processing of the products is carried out beyond the scope of our control and are therefore carried out exclusively at your own responsibility. If liability should still apply, then this is restricted, in the case of all damage, the value of the goods supplied by us and used by you. Our warranty applies to the consistent quality of our products as per our specification and in accordance with our general terms and conditions of delivery and payment. This document is protected by copyright. All rights based on this are reserved. No part of this publication may be translated, reproduced or transmitted in any form or by any similar means, electronic or mechanical, photocopying, recording or otherwise, or stored in a data retrieval system.

London

REHAU Ltd
The Building Centre
26 Store Street,
London
WC1E 7BT

Tel: (0207) 580 6155
Fax: (0207) 307 8595

Slough

Units J & K
Langley Business Centre
Station Road
Langley
Slough SL3 8DS

Tel: (01753) 588500
Fax: (01753) 588501

Birmingham

Tameside Drive,
Holford Way,
Witton,
Birmingham
B6 7AY

Tel: (0121) 344 2300
Fax: (0121) 344 2301

Manchester

Brinell Drive,
Irlam,
Manchester
M44 5BL

Tel: (0161) 777 7400
Fax: (0161) 777 7401

Glasgow

Phoenix House,
Phoenix Crescent,
Strathclyde Business
Park, Bellshill, North
Lanarkshire ML4 3NJ

Tel: (01698) 503700
Fax: (01698) 503701

Dublin

9 St. Johns Court
Business Park,
Swords Road,
Santry,
Dublin 9

Tel: 00353 (0)1 8165020
Fax: 00353 (0)1 8165021



Web: www.rehauconservatories.co.uk Email: enquiries@rehau.com

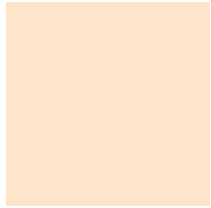
REHAU-Dimension and REHAU-Dimension *Plus* for the best in conservatory systems



REHAU Dimension



The ultimate in conservatory roofs...



REHAU-Dimension is the name REHAU has given to its exciting, new conservatory roof system.

This system has been designed in co-operation with Wendland Roof Solutions and draws on their many years of experience and success in the designing and selling of conservatory roof systems for the UK and Irish markets.

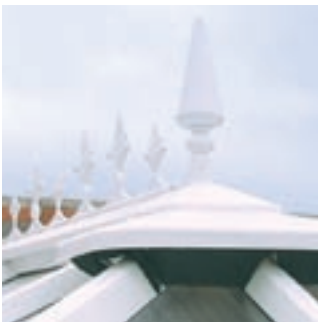
By retaining the fundamental engineering and assembly principles of the existing Wendland roof system whilst at the same time improving certain technical features and introducing new, more modern and attractive aesthetics, this new roof system is exactly right for today's and tomorrow's highly competitive market.

REHAU had a major input into the design aspects, and particularly with regard to the aesthetics, to ensure that the finished roof is a perfect match to the REHAU windows and doors that our customers use to construct conservatory glazed walls.

The story is even more convincing when customers come to understand that all the major

PVC-U components in the REHAU-Dimension conservatory roof system are actually made by REHAU, in one of our UK extrusion plants using high quality REHAU extrusion tooling and our REHAU window matched formulation PVC-U compound, in REHAU quality and colour.

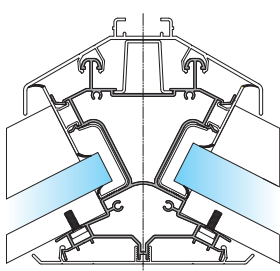
What better assurance of a perfect match could you want? On top of this, all the PVC-U components come with REHAU protective tape so that during the build your customers can see that this is truly a singly branded conservatory and not the 'mix & match' solution offered by many of your competitors.



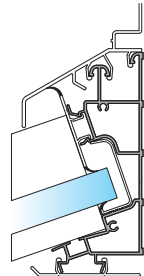
it's all in the design...

The main components

Ridge Assemblies

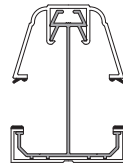


Victorian ridge 24-30

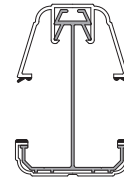


Lean-to-wallplate

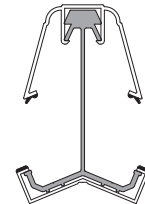
Rafter Combinations



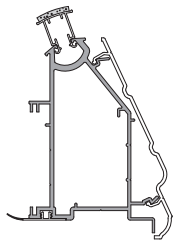
Rafter 80mm



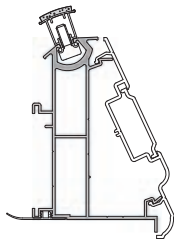
Rafter 90mm



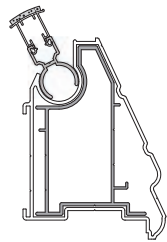
Edwardian Hip 90mm



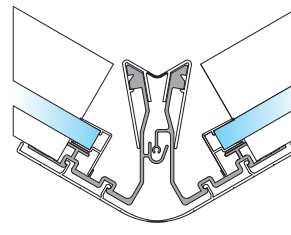
Clad Eaves
Beam Standard



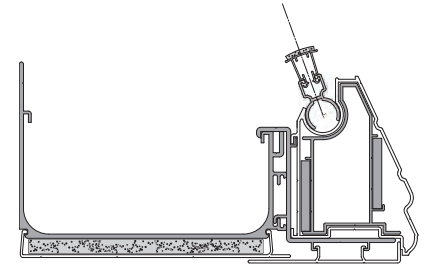
Clad Eaves Beam
Decorative



Fully Enclosed
Eaves Beam



Valley Assembly



Box Gutter Assembly

Main technical parameters and features

Please note that this information is for guidance only and is variable dependent on the postcode, roof style, glazing type, rafter centre and roof pitch. In case of doubt, consultation with the technical department is recommended in combination with the information contained in the various spreadsheets, literature and software available for this purpose.

Description

Apex ridge (Vic Ed etc.) pitch
 Lean-to pitch
 Hipped lean-to pitch
 Maximum lean-to span (without bolsters)
 Maximum lean-to span (with bolsters)
 Maximum ridged span (without bolsters & tie bars)
 Maximum ridged span (with bolsters & tie bars)
 Maximum ridged length (without joints)
 Maximum valley length
 Glazing thickness
 Variable pitch
 Maximum lean-to span (without bolsters)
 Maximum lean-to span (with bolsters)
 Maximum ridged span (without bolsters & tie bars)
 Maximum ridged span (with bolsters & tie bars)
 Maximum ridged length (without joints)
 Maximum valley length
 Glazing thickness
 Gasket colour in white profiles
 Gasket colour in coloured profiles
 Standard colour options

 Rafter top cap shape options
 Rafter under caps
 Coloured rafter top caps
 Coloured ridge covers
 Crestings & finial
 Downpipes
 Roof vents

Technical Parameters

15 degrees to 40 degrees
 2.5 to 30 degrees
 15 to 30 degrees
 4.8m
 5.8m (maximum profile length is 5.8m)
 4.0m (arbitrary limit before structural assessment)
 6.5m (arbitrary limit before structural assessment)
 5.8m (maximum profile length is 5.8m)
 4.0m (maximum profile length is 5.0m)
 24/25mm & 32mm only
 5 degrees to 45 degrees
 4.5mts
 6.0mts
 4.0mts
 7.0mts
 6.0mts
 6.0mts
 16mm to 32mm
 Black to match S706 + silver grey to match REHAU-Tritec
 Black
 REHAU White
 Woodgrain - Mahogany, Rosewood or Golden Oak
 Woodgrain outside / white inside
 Sculptured or chamfered
 sculptured or square
 aluminium only
 laminated in wood effect to match
 Aluminium or PVC
 square or round
 manual or motorised or automatic

Stylish solutions...



■ Sales Aids

REHAU has created some exciting new Consumer Literature – an 8 page A4 sized coloured Consumer Brochure, a 2 sided A4 Summary Leaflet and an A5 drop card, each of which can be overprinted with your own company name and logo.

A high quality, robust sample suitcase containing the main roof components is also available for instances where the consumer is interested in the technical details.

■ Software

REHAU-Dimension Software allows the designer to validate the roof design against the system parameters. Thereafter, a 3D image can be generated on screen and by downloading a digital image of the property the consumer can even see how the finished conservatory will look in situ from any angle.



■ Availability and Training

REHAU-Dimension is available to Installers as fully fabricated kits via recognised REHAU Fabricators of REHAU Window & Door systems.

Some of these Fabricators make the kits themselves from Bar-length, others obtain the kits direct from REHAU.

Installers purchasing REHAU-Dimension for the first time can request '1st Build Assistance' on site and can attend a REHAU Academy Training Course. Arrangements for this should be made via the supplying Fabricator.

Typical style examples



Edwardian



Victorian



Lean-to with gable ends



Edwardian with gable front



L shaped Lean-to



P shaped



T shaped



REHAU Dimension *Plus* ...for total peace of mind

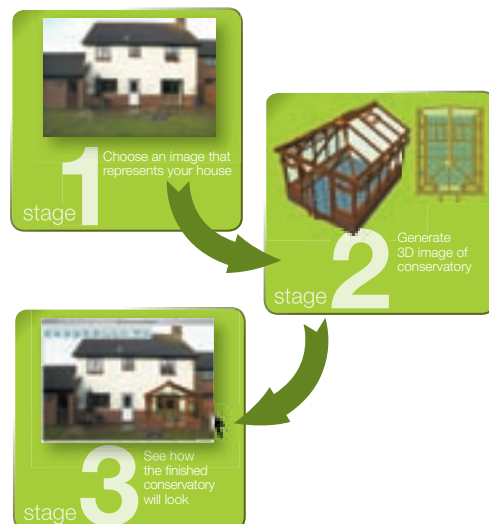


REHAU-Dimension *Plus* is the name that REHAU has given to its complete conservatory superstructure system.

This system combines all the features and benefits of the REHAU-Dimension conservatory roof system with a system for the design and construction of the REHAU glazed walls.

As a result, the total conservatory superstructure has proven structural integrity in a manner not achieved by conventional PVC-U conservatory construction.

The complete conservatory superstructure



■ Structural Integrity

Until now most companies have joined windows and doors together in whichever way to hold up a roof.

After studying the situation, our structural engineers told us that this is not the right thing to do - so we listened and then developed a system that could be proven to have structural integrity because REHAU is committed to give its customers proper solutions.

REHAU-Dimension *Plus* is the first fully integrated, structurally proven, complete conservatory superstructure system on the market. Nobody else so far does it like REHAU, but mark our words it won't be long before they do because it's the right way to do it !

So – now it's time to change...

■ Installation Benefits

Because you don't need the windows and doors to hold the roof up, they can be installed at the end of the process, which means they don't get in the way or risk being damaged during the build. Of course should a window or door element be damaged later it can be replaced without dismantling the whole conservatory - now that's a great step forward don't you agree ?

■ Design & Product Liability

Providing customers follow our design, fabrication and installation rules, then they will enjoy the umbrella of complete design and product liability for the entire superstructure by REHAU - so even if you only had few worries before, now you will have none.

■ Design Versatility

REHAU-Dimension *Plus* conservatory superstructure system is a very versatile system that enables the conservatory designer to design a very large number of standard conservatory styles and sizes as self supporting structures, without the need for additional supports, by integrating different roof shapes with different combinations of glazed wall elements, together with the special posts, brackets and 'stiffening elements'.

The glazed wall elements can be constructed in either S706 70mm or REHAU-Tritec 60mm systems and can reach a maximum height of 2500mm to eaves, enabling full height glazed walls to door height with a fanlight above.

■ Software

To aid the design process, REHAU has developed a bespoke software solution that contains all the technical parameters to ensure that the conservatory designer stays within the technical capabilities of the system.

REHAU-Dimension *Plus* Software allows the designer to validate the complete conservatory design against the system parameters.

Thereafter, a 3D image can be generated on screen and by downloading a digital image of the property the consumer can even see how the finished conservatory will look in situ from any angle, as well as being capable of producing an accurate costing and price.

■ Bespoke Designs

For conservatory designs beyond the self-supporting capabilities of REHAU-Dimension *Plus*, REHAU provides a service for designing and validating special conservatories. This is a chargeable service but is freely available. Please ask your Regional REHAU Sales office for the details and fees.

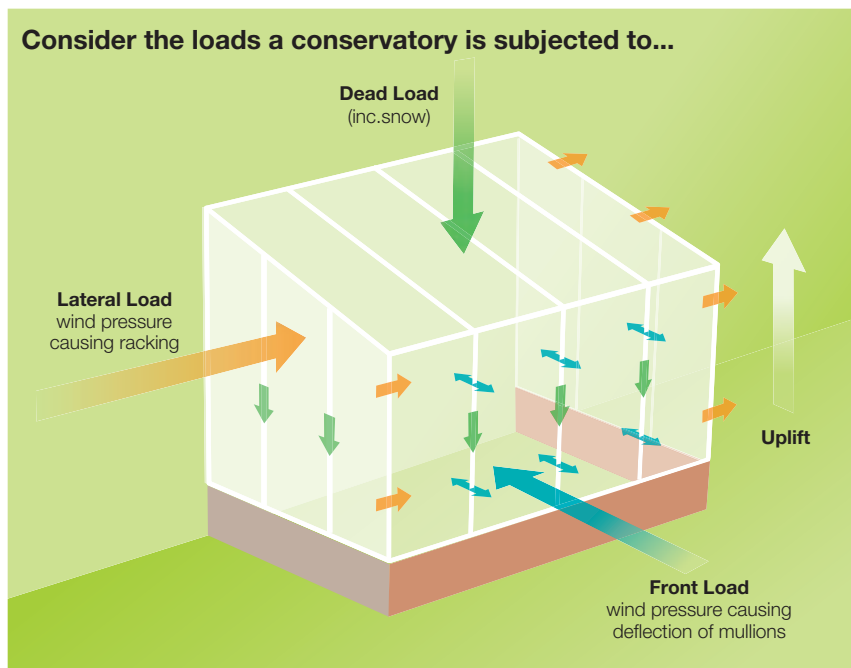


Strong by design...

Ever wondered why other systems companies still don't tell you how to build the entire superstructure even though some sell roof systems as well as window and door systems?

The answer is because it's not so easy, as REHAU found out, that's why.

So what's so difficult ?



■ Solving the Problems

For REHAU to be able to sell a complete conservatory superstructure system, we had to **know** that it is structurally sound, not just **think** that it is. This means having proof supplied by structural engineers.

The problem is to design the superstructure in such a way so that it can provably carry and transmit the significant loads, safely through the superstructure to the base and host wall, without deformation and the risk of broken glass, whilst avoiding the need for significant measures like portal frames that would add prohibitive cost.

Dead Load: apart from being a sort of 'mix & match' or 'hotchpotch' of different components from different suppliers, which may not match aesthetically, sitting the roof directly on top of windows and doors is not good practice because PVC-U windows and doors are not normally designed to take the so-called 'Dead Load' from the roof, which can be considerable when the weight of snow is taken into account.

Lateral Load: and it's not just the 'Dead Load' that the conservatory structure needs to withstand. Wind pressure on the sides of a conservatory is a very strong force, particularly in high winds causing the sides to act like large sails on a sailing boat trying to push the conservatory sideways. This force

is known in structural engineering parlance as the 'Lateral Load' and without proper structural resistance to it, the front of the conservatory could be deformed. Simply joining PVC-U windows and doors together to resist such forces is unwise, they're not designed to take such forces.

Front Load: as if this wasn't enough, the 'Front Load' on the glazed walls imposed by the wind is a considerable force and without proper strengthening at intervals the windows and doors can deflect to unacceptable levels.

Uplift: the 4th major force to be resisted by a conservatory is the 'Uplift' force. With windows and doors open, the conservatory superstructure can in certain circumstances and in nothing more than light winds, literally try to 'take-off' like a kite. To properly resist this, special care must be taken with the construction of the base and dwarf walls (strapping down) and the connection between the superstructure and the rest of the construction.

■ Ease of Installation

You'd be forgiven for wondering whether in creating the complete conservatory superstructure, REHAU has made the whole conservatory more complicated, costly and difficult to fabricate and assemble.

Not so ! REHAU is delighted to unveil that in solving the technical issues, we have also simplified the method of installation which delivers real benefits to the Installer without adding significant cost.

In fabrication too, the steps to be followed are straightforward.

and it's so easy...

Installation process

Step

1.

Position the load bearing sill.



Step

2.

Position and fix the sill anchor brackets to the sill.



Step

3.

Fix the eaves anchor brackets into the top of the structural posts.



Step

4.

Fix the 1st post and starter bar assembly at the house wall & onto its sill anchor bracket.



Step

5.

Fix the other posts onto their sill anchor brackets.



Step

6.

Fix the eaves beam onto the top of the posts, locating the brackets into the rebate in the eaves beam.



Step

7.

Erect the roof structure – skeleton superstructure completed.



Step

8.

Glaze the roof.



Step

9.

Install the windows and doors between the posts starting with the special 'Structural Elements'.



Step

10.

Glaze the 'Structural Elements' in the special way.



Step

11.

Glaze the remaining windows and doors and remove the protective tape.



Step

12.

Finally, fit the post covers, inside and out, then carry out the rest of the finishing-off jobs, as for any conservatory.



REHAU Dimension *Plus*...



Sales and Marketing Aids

- Website
- Sales brochures
- 10 Year insurance backed guarantee
- Local media advertising
- Directory advertising
- Sample case
- Drop cards
- Showroom kits
- Van liveries
- Corporate workwear

■ Consumer Message

In developing REHAU-Dimension *Plus* we naturally considered what would make Consumers want to buy a REHAU-Dimension *Plus* conservatory rather than any other.

So we realised that a great part of our marketing effort should be focused on helping Installers get the message across to Consumers about what makes a REHAU-Dimension *Plus* conservatory different and better than anything else they can buy.

Of course the answer to this has several strands – and the slogan we've identified that best encapsulates it - is:

“for total peace of mind”

The resonance for this message with Consumers comes from understanding that for any homeowner, purchasing a conservatory is a major financial investment in a building structure that will be permanently attached to their home.

Discerning homeowners are therefore understandably more nervous and more careful about selecting the company and product than they are for lower value home improvement products.



We believe that by reaching out to Consumers with a reassuring message that has real substance and that competitors cannot match or challenge, should allay their fears and objections and aid a positive purchase decision in favour of REHAU-Dimension *Plus* conservatories.

We believe, that providing Installers can demonstrate that a REHAU-Dimension *Plus* conservatory is just as good or better looking than the competition (and it is), will fulfil their lifestyle aspirations (and it will) and is not significantly more expensive than the competition (and it isn't), then the message:

“for total peace of mind”

with substantiated explanations, will enable these Installers to be more successful.

To substantiate this message we are emphasising 4 points:

■ The REHAU Pedigree

– emphasising REHAU's impressive 50+ year history of excellence in polymer engineering as demonstrated by the “high-tech” components supplied to the automotive industry for customers such as Jaguar and BMW.

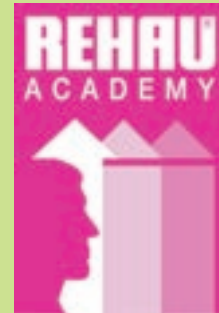
■ **A Superior Product** – underwritten by REHAU structural engineers and visibly stronger.

■ **Registered Installers** – only companies who have been vetted, trained and monitored can install the product, ensuring it will be installed correctly.

■ **10 Year insurance backed Guarantee** – the special REHAU insurance backed guarantee – that fully protects the consumer for a low cost.

All these points are emphasised in the REHAU-Dimension *Plus* Consumer Brochure, Web-site and other marketing aids which are only available to Registered REHAU-Dimension *Plus* Installers.

for total peace of mind...



To find out how to become a REHAU-Dimension *Plus* Registered Installer, what the benefits, rules and criteria for membership are, please contact your usual REHAU Fabricator or contact your nearest Regional REHAU Sales Office.

■ REHAU-Dimension *Plus* Registered Installer Scheme

The importance of the Installer in the REHAU-Dimension *Plus* story cannot be over emphasised.

The purpose of the Installer Scheme is so as to ensure as far as we reasonably can, that the consumer gets what REHAU intends. Also, to ensure as far as we reasonably can, that our liability for what is a complete building structure, is safeguarded.

The plain fact is that it is all very well for REHAU to have a wonderful Technical Manual that describes how everything must be done, but how does REHAU and the consumer know that the Installer will do it right?

By creating a scheme of this nature, REHAU is, and can be seen to be, taking proper care and responsibility for ensuring, as far as we reasonably can, that Consumers' and REHAU's interests are assured. Furthermore, this is a very clear substantiation of the consumer message.



For details - see back page.